

AGENDA

Meeting: Marlborough Area Board
Place: Marlborough Town Hall, 5 High St, Marlborough SN8 1AA
Date: Tuesday 3 September 2019
Time: 7.00 pm

Including the Parishes of: Aldbourne, Avebury, Baydon, Berwick Bassett & Winterbourne Monkton, Broad Hinton & Winterbourne Bassett, Chilton Foliat, East Kennett, Froxfield, Fyfield & West Overton, Marlborough, Mildenhall, Ogbourne St Andrew, Ogbourne St George, Preshute, Ramsbury & Axford and Savernake

Drop in Session, Networking Opportunity and Refreshments from 6.00pm.

Emily Grigor of Wiltshire Police will be in attendance at the drop in session to discuss any policing issues you would like to raise.

Please direct any enquiries on this Agenda to Tara Shannon Democratic Services Officer, direct line 01225 718352 or email tara.shannon@wiltshire.gov.uk

All the papers connected with this meeting are available on the Council's website at www.wiltshire.gov.uk

Press enquiries to Communications on direct lines (01225) 713114 / 713115.

Wiltshire Councillors

Cllr James Sheppard, Aldbourne and Ramsbury
Cllr Stewart Dobson, Marlborough East (Chairman)
Cllr Jane Davies, West Selkley
Cllr Nick Fogg MBE, Marlborough West (Vice-Chair)

Recording and Broadcasting Information

Wiltshire Council may record this meeting for live and/or subsequent broadcast on the Council's website at <http://www.wiltshire.public-i.tv>. At the start of the meeting, the Chairman will confirm if all or part of the meeting is being recorded. The images and sound recordings may also be used for training purposes within the Council.

By entering the meeting room you are consenting to being recorded and to the use of those images and recordings for broadcasting and/or training purposes.

The meeting may also be recorded by the press or members of the public.

Any person or organisation choosing to film, record or broadcast any meeting of the Council, its Cabinet or committees is responsible for any claims or other liability resulting from them so doing and by choosing to film, record or broadcast proceedings they accept that they are required to indemnify the Council, its members and officers in relation to any such claims or liabilities.

Details of the Council's Guidance on the Recording and Webcasting of Meetings is available on request. Our privacy policy can be found. [here](#).

Parking

To find car parks by area follow [this link](#). The three Wiltshire Council Hubs where most meetings will be held are as follows:

County Hall, Trowbridge
Bourne Hill, Salisbury
Monkton Park, Chippenham

County Hall and Monkton Park have some limited visitor parking. Please note for meetings at County Hall you will need to log your car's registration details upon your arrival in reception using the tablet provided. If you may be attending a meeting for more than 2 hours, please provide your registration details to the Democratic Services Officer, who will arrange for your stay to be extended.

Public Participation

Please see the agenda list on following pages for details of deadlines for submission of questions and statements for this meeting.

For extended details on meeting procedure, submission and scope of questions and other matters, please consult [Part 4 of the council's constitution](#).

The full constitution can be found at [this link](#).

For assistance on these and other matters please contact the officer named above for details

	Time
<p>1 Chairman's Welcome and Introductions</p> <p>To welcome those present to the meeting.</p>	7.00pm
<p>2 Apologies for Absence</p> <p>To receive any apologies for absence.</p>	
<p>3 Minutes (<i>Pages 1 - 10</i>)</p> <p>To approve and sign as a correct record the minutes of the meetings held on 23 July 2019.</p>	
<p>4 Declarations of Interest</p> <p>To receive any declarations of disclosable interests or dispensations granted by the Standards Committee.</p>	
<p>5 Community Area Grant Scheme (<i>Pages 11 - 16</i>)</p> <p>To consider the following applications to the community area grants scheme:</p> <ul style="list-style-type: none"> • Christchurch Marlborough, Wesley Hall Marlborough Sound System, £600.00, towards installing a simple sound reproduction and loop system in the Wesley Hall, Oxford Street, Marlborough. 	7.05pm
<p>6 Chairman's Announcements (<i>Pages 17 - 18</i>)</p> <p>To receive the following announcements through the Chairman (written briefing notes are available in the full agenda pack, or online):</p> <ul style="list-style-type: none"> • How Dementia Friendly is Wiltshire A report is available detailing what people living with dementia and their carers value most about dementia friendly initiatives, it can be accessed via this link: https://www.healthwatchwiltshire.co.uk/report/2019-07-24/how-dementia-friendly-wiltshire. • NAFD Tapestry Coming to Marlborough The tapestry produced for National Armed Forces Day will be coming to Marlborough soon. 	7.15pm
<p>7 Partner Updates (<i>Pages 19 - 40</i>)</p> <p>To note the attached Partner updates and receive any further information partners wish to share:</p>	7.25pm

	<ul style="list-style-type: none"> • Wiltshire Police • Wiltshire Fire and Rescue • Healthwatch Wiltshire • Transition Marlborough • Town / Parish Councils <ul style="list-style-type: none"> ○ Marlborough Town Council • Marlborough Area Neighbourhood Plan 	
8	<p>Community Safety</p> <ul style="list-style-type: none"> • Anti-Social Behaviour – to receive a presentation from Rowena Lansdown, Wiltshire Council Anti-Social Behaviour Officer • Watch Updates – to receive a presentation from Lauren Clark, Wiltshire Police, on Neighbourhood Watch, Horse and Farm Watch, Lorry Watch, Canal Watch, Hotel Watch and the benefits of signing up and using Community Messaging. 	7.40pm
9	<p>Local Youth Network Update and Applications for Youth Funding</p> <p>To receive any updates on the Local Youth Network.</p> <p>There were no applications for Youth Grant Funding.</p>	8.10pm
10	<p>Marlborough Area Health and Wellbeing Group</p> <p>To receive any updates from the Marlborough Area Health and Wellbeing Group.</p> <p>There were no applications for Health and Wellbeing funding.</p>	8.15pm
11	<p>Community Area Transport Group</p> <p>There has been no meeting of the CATG since the last area board.</p> <p>The next CATG meeting will be held on 19 September 2019 at 10.00am in Marlborough Town Hall.</p>	8.20pm
12	<p>Any Other Questions</p> <p>The Chairman will invite any remaining questions from the floor.</p>	8.25pm
13	<p>Urgent items</p> <p>Any other items of business which the Chairman agrees to consider as a matter of urgency.</p>	
14	<p>Evaluation and Close</p>	8.30pm

The next meeting of the Marlborough Area Board will be held on Tuesday 19 November, 7.00pm at Marlborough Town Hall.

MINUTES

Meeting: MARLBOROUGH AREA BOARD
Place: Marlborough Town Hall, 5 High St, Marlborough SN8 1AA
Date: 23 July 2019
Start Time: 7.00 pm
Finish Time: 8.55 pm

Please direct any enquiries on these minutes to:

Tara Shannon Democratic Services Officer, Tel: 01225 718352 or (e-mail) tara.shannon@wiltshire.gov.uk

Papers available on the Council's website at www.wiltshire.gov.uk

In Attendance:

Wiltshire Councillors

Cllr James Sheppard, Cllr Stewart Dobson (Chairman), Cllr Jane Davies and Cllr Nick Fogg MBE (Vice-Chair)

Also in attendance: Cllr Chris Williams, Portfolio Holder for Communities and Area Boards

Wiltshire Council Officers

Alexa Davies - Community Engagement Manager, Dominic Argar - Technical Support Officer, Jane Deeley - Road Safety Education Manager, Tara Shannon - Democratic Services Officer

Town and Parish Councils

Marlborough Town Council
Fyfield & West Overton Parish Council
Mildenhall Parish Council
Savernake Parish Council -

Partners

Wiltshire Police and OPCC
Wiltshire Fire & Rescue Service

Total in attendance: 37

<u>Agenda Item No.</u>	<u>Summary of Issues Discussed and Decision</u>
45	<p><u>Election of Chair for 2019/2020</u></p> <p>Cllr James Sheppard, seconded by Cllr Nick Fogg MBE, moved that Cllr Stewart Dobson be elected as Chairman for 2019/2020.</p> <p>There being no other nominations, it was:</p> <p>Resolved:</p> <p>To elect Cllr Stewart Dobson as Chairman for 2019/2020.</p> <p>Cllr Dobson then took the Chair.</p>
46	<p><u>Election of Vice Chair for 2019/2020</u></p> <p>Cllr Jane Davies, seconded by Cllr Stewart Dobson, moved that Cllr Nick Fogg MBE be elected as Vice-Chairman for 2019/2020.</p> <p>There being no other nominations, it was;</p> <p>Resolved:</p> <p>To elect Cllr Nick Fogg MBE as Vice-Chairman for 2019/2020.</p>
47	<p><u>Chairman's Welcome and Introductions</u></p> <p>The new Chairman thanked Cllr James Sheppard for his work as the previous Marlborough Area Board Chairman and wished him every success in his new role as Chairman of the Council.</p> <p>The Chairman welcomed everyone to the meeting and invited the Councillors and Officers present introduce themselves.</p>
48	<p><u>Apologies for Absence</u></p> <p>There were no apologies for absence.</p>
49	<p><u>Minutes</u></p> <p>Resolved:</p> <p>To approve and sign as a correct record the minutes of the meeting held</p>

	on 14 May 2019.
50	<p><u>Declarations of Interest</u></p> <p>There were no declarations of interest.</p>
51	<p><u>Chairman's Announcements</u></p> <p>The Chairman made the following announcements:</p> <ul style="list-style-type: none"> • Winter Weather Provisions Wiltshire Council would once again be running the Parish Emergency Assistance Scheme (PEAS) which would give Town and Parish Councils the opportunity to get hold of vital kit which could be used during adverse weather events. The application form was now available from weather.team@wiltshire.gov.uk. Requests for equipment should be made by the end of August 2019. • Healthier communities A new project by Wiltshire Council to help residents on a low income improve their health by becoming more active was launched in May. Wiltshire Council's Healthier Communities project would target ten areas across Calne, Chippenham, Salisbury, Trowbridge and Melksham and would provide estate-based sport and physical activity opportunities to residents living in identified locations. Residents from each community would be invited to take part and shape future provision. • Highways Improvements and Traffic Survey Requests Wiltshire Council was changing the way highway improvements and traffic surveys were requested by members of the public and through Town and Parish Councils. The current process required updating to improve the customer experience and to reduce the steps involved. The proposed new system will foster a closer working relationship with town and parish councils, whilst providing a better and more informed experience for members of the public. The Chairman directed people to the agenda report for more details. • Consultation on Proposal to increase Downland School capacity The Chair announced that there was an additional late announcement that was not included in the agenda. Wiltshire Council was proposing to increase the number of places at Downland School from 69 places to 90 from September 2019. Downland, a special school, situated on the southern edge of Devizes, that supports the needs of children and young people who have an Education Health and Care Plan (EHCP) identified to support their Social, Emotional and Mental Health needs.

	<p>A consultation on the proposal was now open and would run until 21 September 2019.</p> <p>At the Chairman’s invitation Cllr Davies as Portfolio Holder for Education and SEND spoke briefly explaining that Wiltshire Council had been looking at special needs provision. One aim was to increase outreach from special schools to support mainstream schools, this expansion was part of that process. People were encouraged to email SpecialSchools@wiltshire.gov.uk to comment.</p>
52	<p><u>Partner Updates</u></p> <p>Written updates were available in the agenda pack and supplements from the Police, the Fire Service, Healthwatch Wiltshire and the Wiltshire Clinical Commissioning Group.</p> <p>In addition to the written updates, the following verbal updates were given by partners present:</p> <ul style="list-style-type: none"> • Wiltshire Police <p>Acting Inspector Pete Foster referred the meeting to the written report in the agenda pack, which was in a new format. There was no specific update since the last meeting. Marlborough Police aimed to move to the corner house at the end of September. Operationally this wouldn’t make a difference, the police would still provide the same level of service. Inspector Foster then offered to answer questions.</p> <p>In response to a question regarding crime levels rising when police stations closed the inspector stated that the Marlborough police team had always been based in Devizes and there would still be an enquiry desk in Marlborough. Crime rates had reduced in Marlborough and a new police community coordinator had been employed. Nationally funding and staffing had reduced and although everyone would like more, new ways of working, for example better new technology ensured that police officers no longer had to be tied to a desk.</p> <p>The Deputy Police and Crime Commissioner, Jerry Herbert stated that you could either concentrate your resources or spread them thinly and it was more efficient to concentrate them. Fraud and cybercrime now had a new digital investigations unit and they had led several prosecutions. They also had a crime prevention role and could be available to attend community events if requested.</p> <p>Cllr Chris Williams, Portfolio Holder for Communities and Area Boards stated that the cybercrime team had attended area boards to do presentations and that you could sign up to the messaging service online for updates on cyber crime issues.</p> <p>In response to a question from the audience regarding levels of prosecution and penalisation, which was 8% nationally, it was stated by the Deputy PCC that Wiltshire was within national levels. Prosecutions and penalties depended a lot on the type of crime and the evidence</p>

needed. Drug crimes had high rates of prosecution, others less so. This was often dependent on the evidence required by the Crime Prosecution Service.

- **Fire Service**

Wayne Rosling on behalf of Dave Adamson, Station Manager, gave a brief update to the meeting and summarised the agenda report. Safe and Well visits could be booked through their website. There was still a need to recruit on call fire fighters. The Marlborough Unit had attended 20 incidents. There were no questions from the audience.

- **Town and Parish Councils**

Mervyn Hall, Mayor of Marlborough Town Council gave an update to the meeting.

The Town Council was hosting a Civil War Re-enactment of the Battle of Marlborough on The Common on 27/28 July 2019. This would be staged by the English Civil War Society there would also be a Living History in Priory Gardens and many other activities including an exhibition at The Merchant's House.

The new toilet facilities at the Town Hall were now open and had been opened by Cllr Nick Fogg, MBE.

The refurbishment of the George Lane Toilet Block was now complete and had 4 new toilet cubicles, space for a Tourist Information Point and a Community Room, which was available for rent. A part time tourism officer had also been employed.

On 7 June, a plaque was unveiled at the Library to commemorate Eglantyne Jebb, founder of the Save the Children Fund. 2019 was the 100th anniversary of Save the Children.

Regarding devolution of services, the town council was planning to take on services from Wiltshire Council in 2020/2021.

Presentations had been made to Revd Heather Cooper, Methodist Minister at Christchurch who were leaving Marlborough after 8 years and to Tim and Jonelle Price, nationally and internationally successful equestrians living in our area.

- **Marlborough Area Neighbourhood Plan**

Mayor Mervyn Hall also updated the meeting on the MANP. An informal consultation was underway that would end on 2 August 2019. A strategic environmental assessment was to take place. This was an important part of the process. MANP needed this as its area sits in an AONB. It would give advice about environmental and other sustainability aspects of any sites going forward for development. The next steps included; Review of feedback and technical processes; Pre-Submission Plan issued for Formal Consultation (November/December 2019); Submission Plan to Wiltshire Council following review of feedback (February/March 2020); Wiltshire Council Formal Consultation with you followed by the Examination; followed by a referendum.

	The Chairman thanked all the partners for their updates.
53	<p><u>Local Youth Network Update and Applications for Youth Funding</u></p> <p>It was noted that there had not been a LYN meeting since the last area board and there were no applications for Youth Grant Funding.</p>
54	<p><u>Road Safety</u></p> <p>Jane Deeley, Wiltshire Councils Road Safety Education Manager gave a presentation on road safety.</p> <p>Figures on Road Traffic Collisions could be difficult as some RTC's were not recorded (if the police did not attend or the people involved did not go to hospital). Figures could also be skewed if for example, a mini bus with lots of people on board was involved. So, although figures were useful in giving an idea of trends and in securing funding, statistics were about people and the aim of Jane's team was to help people.</p> <p>In 2018 in Wiltshire, including the M4 and trunk roads, 228 people were killed or seriously injured. This was slightly up from 2017, but there was a general downward trend. 25 of the 228 were killed. There were 970 slight injury accidents, which was down about a third. Motor cycles were a particular concern as 4 of the deaths were motor cycle riders. This was mainly older people rediscovering or starting biking (rather than young people). Male car drivers featured highly (however there was context to be considered here – possibly male drivers drive more miles).</p> <p>The team were hoping to pick up highways data (e.g. when they replace signs, fix lights, mend walls etc) as that sort of data indicated little accidents. It was hoped that they could merge all the data.</p> <p>Jane and her team of 2 education safety officers were responsible for education and training. Their aim was to drive behaviour changes, so they looked at why people behaved like this and how it could be changed. It was no good just reprimanding them – they must find something that works. The team had limited capacity due to its size. They undertook a lot of work on skills such as 'Bikability' (like cycling proficiency). They also ran walk safe courses which were free. Youngsters were trained on push scooters. This was a good way to reach young people to get them to think about how they use the roads.</p> <p>There was a 'Pass Plus' scheme for new drivers (approx. 6 hours) which included night driving, motorway driving and other things that weren't covered on training. There was a similar scheme for older drivers.</p> <p>The National Driver Offender Scheme – which looked at safe and considerate driving (usually for those who have been charged with driving without due care and attention etc) was run in partnership with the police and fire, IAM and</p>

	<p>Turning point.</p> <p>Future plans – in 2019 the government launched a statement – a lifetime of road safety. The thoughts behind this were to get basic skills in early life and continuously develop those skills. Locally plans were to include; better analysis of data, stronger across department working, linking sustainable and safer travel, supporting schools and youth groups to provide education to pupils and parents; evaluation and increased publicity.</p> <p>Roger Fooks of Community Speedwatch then gave a brief presentation to the meeting. Community Speedwatch had started 5 or 6 years ago, Wiltshire and Swindon had about 101 teams with around 1400/1500 volunteers. Speedwatch teams could often be seen on the side of road with a speed-reading device, this was a laser device for detecting speed. If someone was driving more than 10% plus 2 mph over the speed limit, their vehicle details would be taken, and a letter sent to the motorist to education them. If an excessive speeder was caught then generally an officer would go to talk to them. Education was the aim of the teams. Speedwatch was recruiting new teams and volunteers all the time.</p>
55	<p><u>Appointments to Outside Bodies and Working Groups 2019/2020</u></p> <p>The Board considered the Outside Bodies and Working Groups report attached to the agenda.</p> <p>It was proposed that the Area Board reconstituted the working groups of the Area Board and appointed working group representatives and members to outside bodies as detailed in the report.</p> <p><u>Resolved:</u></p> <p>The Marlborough Area Board agreed to:</p> <p>a) Appoint Councillor representatives to Outside Bodies as set out at Appendix A;</p> <p>b) Reconstitute and appoint to the Working Group(s) as set out in Appendix B;</p> <p>c) Note the Terms of Reference for the Working Group(s), as set out in Appendix C.</p> <p>d) To defer the appointment of an Older Persons and Carers Champion until a later meeting.</p>

56	<p><u>Update from Community Engagement Manager</u></p> <p>Alexa Davies, Community Engagement Manager gave an update to the meeting.</p> <p>National Armed Forces Day in Salisbury had been a great success. Approximately 40K thousand people attended over the weekend, which had included a military parade, a fly past, and a performance by the Kaiser chiefs. Cllr Dobson had arranged a coach, with Area Board funding, for people to go down and all those who went had a great day.</p> <p>A representative of the Marlborough Royal British Legion spoke and thanked Alexa and Wiltshire Council for a fabulous day.</p> <p>A summer reading challenge was to take place between 13 July and 7 September for 4 to 11-year olds.</p> <p>Details were given regarding the types of funding available from the area board and people were encouraged to contact Alexa for details, on: 01249 706610 or alexa.davies@wiltshire.gov.uk.</p>
57	<p><u>Community Area Grant Scheme</u></p> <p>The Chairman introduced the Community Area Grant applications as detailed in the agenda and agenda supplements.</p> <p>Representatives of the Savernake Explorer Scout Unit, Winterbourne Bassett Community Pub and Lambourn RDA Incorporating Carriage Driving Ltd spoke in support of their applications.</p> <p>The Board considered the applications for community area grant funding and it was;</p> <p><u>Resolved:</u></p> <ul style="list-style-type: none"> • To grant Savernake Explorer Scout Unit, £500.00 of the £1751.00, towards Savernake Explorers Equipment Storage Facility. REASON: The board and MTC had previously supported the group and the board wanted the limited funding available to last the year, to support as many groups as possible. • To grant Winterbourne Bassett Community Pub, £2,500 of the £5000.00 requested, towards village pub porch with wheel chair access. REASON: The board wanted the limited funding available to last the year and to be able to support as many groups as possible

	<ul style="list-style-type: none"> • To grant Lambourn RDA Incorporating Carriage Driving Ltd, £1000.00 of the £2500.00 requested, towards Lambourn Riding for the Disabled - New Pony. <p>REASON: The board wanted the limited funding available to last the year and to be able to support as many groups as possible</p>
58	<p><u>Community Area Transport Group</u></p> <p>Cllr Nick Fogg MBE updated the meeting.</p> <p>In conjunction with highway engineers, the CATG focused on 5 projects at a time. Of the 5 current projects, 4 were moving rapidly to fruition, the other, on the A4 was very difficult to resolve.</p> <p>The minutes of the meeting were in the agenda pack if people wanted further details.</p> <p>The 20mph limit in Marlborough, had been through statutory processes and it was hoped that it would be implemented in early October. At the dangerous bend in Chilton Foliat safety measures and signage were being installed.</p> <p>Other projects that will replace those that come through to fruition.</p>
59	<p><u>Any Other Questions</u></p> <p>There were none.</p>
60	<p><u>Urgent items</u></p> <p>Due to the timing of the Health and Wellbeing meeting, the reports were published in agenda supplement 1 and considered under Urgent Items.</p> <p>Jill Turner, Chair of HWBG gave an update to the meeting. The group had been focusing on the job description for the Older Persons and Carers Champion and planning for a HWB event in the summer of next year.</p> <p>Jill Turner spoke in support of the following application for Health and Wellbeing funding which was considered by the board and it was;</p> <p><u>Resolved:</u></p> <ul style="list-style-type: none"> • To grant an Area Board Led Initiative, proposed by Jill Turner, HWBG Chair, £1,500.00, towards funding an Older Persons and Carers Champion.

61	<p><u>Evaluation and Close</u></p> <p>The Chairman thanked everyone for attending.</p> <p>It was noted that the next meeting of the Marlborough Area Board would be on 2 September 2019, 7.00pm at Marlborough Town Hall.</p>

Report to	Marlborough Area Board
Date of Meeting	03/09/2019
Title of Report	Community Area Grant funding

Purpose of the report:

To consider the applications for funding listed below.

Applicant	Amount requested
Applicant: Christchurch Marlborough Project Title: Wesley Hall Marlborough Sound System View full application	£600.00

1. Background

Area Boards have authority to approve Area Grants under powers delegated to them. Under the Scheme of Delegation Area Boards must adhere to the [Area Board Grants Guidance](#)

[The funding criteria and application forms](#) are available on the council’s website.

2. Main Considerations

2.1. Councillors will need to be satisfied that funding awarded in the 2019/2020 year is made to projects that can realistically proceed within a year of it being awarded.

2.2. Councillors must ensure that the distribution of funding is in accordance with the Scheme of Delegation to Area Boards.

2.3. Councillors will need to be satisfied that the applications meet the Community Area Board grants criteria.

3. Environmental & Community Implications

Grant Funding will contribute to the continuance and/or improvement of cultural, social and community activity and wellbeing in the community area, the extent of which will be dependent upon the individual project.

4. Financial Implications

Financial provision had been made to cover this expenditure.

5. Legal Implications

There are no specific legal implications related to this report.

6. Human Resources Implications

There are no specific human resources implications related to this report.

7. Equality and Inclusion Implications

Community Area Boards must fully consider the equality impacts of their decisions in order to meet the

Council's Public Sector Equality Duty.

Community Area Grants will give local community and voluntary groups, Town and Parish Council's equal opportunity to receive funding towards community-based projects and schemes, where they meet the funding criteria.

8. Safeguarding Implications

The Area Board has ensured that the necessary policies and procedures are in place to safeguard children, young people and vulnerable adults.

9. Applications for consideration

Application ID	Applicant	Project Proposal	Requested
3254	Christchurch Marlborough	Wesley Hall Marlborough Sound System	£600.00
Project Description: To install a simple sound reproduction and loop system in the Wesley Hall Oxford Street Marlborough primarily to assist various community organisations that make regular use of the hall. Feedback from the organisations is that the acoustics in the hall are such that voices cannot always be heard particularly for those suffering some hearing loss.			
Input from Community Engagement Manager: The project meets the community grant scheme criteria for 2019/2020. The Marlborough community area selected diversity and social inclusion as its top priority for the culture theme in the Joint Strategic Needs Assessment 2017-2019. An improved sound system would help to make the venue more inclusive for the wider community, especially those people living with hearing loss.			
Proposal That the Area Board determines the application.			

No unpublished documents have been relied upon in the preparation of this report.

Report Author:

Alexa Davies

Community Engagement Manager

01249 706610

Alexa.Davies@wiltshire.gov.uk

Grant Applications for Marlborough on 03/09/2019

ID	Grant Type	Project Title	Applicant	Amount Required
3254	Community Area Grant	Wesley Hall Marlborough Sound System	Christchurch Marlborough	£600.00

3254	Community Area Grant	Wesley Hall Marlborough Sound System	Christchurch Marlborough	£600.00
------	----------------------	--------------------------------------	--------------------------	---------

Submitted: 26/03/2019 17:02:12

ID: 3254

Current Status: Application Appraisal

To be considered at this meeting:

tbc contact Community Area Manager

1. Which type of grant are you applying for?

Community Area Grant

2. Amount of funding required?

£0 - £500

3. Are you applying on behalf of a Parish Council?

No

4. If yes, please state why this project cannot be funded from the Parish Precept

5. Project title?

Wesley Hall Marlborough Sound System

6. Project summary:

To install a simple sound reproduction and loop system in the Wesley Hall Oxford Street Marlborough primarily to assist various community organisations that make regular use of the hall. Feedback from the organisations is that the acoustics in the hall are such that voices cannot always be heard particularly for those suffering some hearing loss.

7. Which Area Board are you applying to?

Marlborough

Electoral Division

8. What is the Post Code of where the project is taking place?

SN8 1AH

9. Please tell us which theme(s) your project supports:

- Arts, crafts and culture
- Countryside, environment and nature
- Food, farming and local markets
- Health, lifestyle and wellbeing
- Heritage, history and architecture
- Inclusion, diversity and community spirit

If Other (please specify)

10. Finance:

10a. Your Organisation's Finance:

Your latest accounts:

08/2018

Total Income:

£54529.00

Total Expenditure:

£51506.00

Surplus/Deficit for the year:

£3023.00

Free reserves currently held:

(money not committed to other projects/operating costs)

£47395.00

Why can't you fund this project from your reserves:

Our costs are increasing year by year and at the same time we are experiencing a reduction in numbers of contributing members. The reserves are required to sustain anticipated income deficiencies in future years. Were we to fund the project in its entirety we would need to increase rents which would have a detrimental effect on the community organisations that use the premises.

We are a small community group and do not have annual accounts or it is our first year:

10b. Project Finance:

Total Project cost		£1715.00		
Total required from Area Board		£600.00		
Expenditure (Itemised expenditure)	£	Income (Itemised income)	Tick if income confirmed	£
Quotation amount	1715.00	Our reserves	yes	515.00
		Landfill		600.00
		Communities Fund		
Total	£1715			£1115

11. Have you or do you intend to apply for a grant from another area board within this financial year?

No

12. If so, which Area Boards?

Marlborough

13. Please tell us WHO will benefit and HOW they will benefit from your project benefit your local community?

The Wesley Hall in Oxford Street provides an affordable but comfortable venue for a number of small community groups in and around Marlborough including for example U3A Marlborough Gardening Club Marlborough W.I. and Marlborough and District Link. Some of the people who attend these groups suffer some hearing impairment and have suggested that the installation of a sound reproduction system including a loop would be very beneficial. We do not want to increase the rates that we charge to recover the cost of the sound system because any increase would have to be passed on to the members many of whom are living on fixed incomes.

14. How will you monitor this?

We will consult with user-groups to ensure they are satisfied with the system.

15. Safeguarding. Please tell us about how you will protect and safeguard those involved in your project

16. If your project will continue after the Wiltshire Council funding runs out, how will you continue to fund it?

NA

17. Is there anything else you think we should know about the project?

NA

18. DECLARATION

Supporting information - Please confirm that the following documents will be available to inspect upon request:

Quotes:

Yes, I will make available on request 1 quote for individual project costs over £500 & 2 quotes for project costs over £1000 (Individual project costs are listed in the expenditure section above)

Accounts:

Yes, I will make available on request the organisation's **latest accounts**

Constitution:

Yes, I will make available on request the organisation's Constitution/Terms of Reference etc.

Policies and procedures:

Yes, I will make available on request the necessary and relevant policies and procedures such as Child Protection, Safeguarding Adults, Public Liability Insurance, Access audit, Health & Safety and Environmental assessments.

Other supporting information (Tick where appropriate, for some project these will not be applicable):

And finally...

Yes, The information on this form is correct, that any award received will be spent on the activities specified.

Agenda Item 6

Chairman's Announcements

Subject:	How Dementia Friendly is Wiltshire?
Web contact:	https://www.healthwatchwiltshire.co.uk/report/2019-07-24/how-dementia-friendly-wiltshire

Healthwatch Wiltshire's latest report is now available online. It gathered the views and experiences of more than 100 people in the county who are affected by dementia.

“How Dementia Friendly is Wiltshire?” focuses on two elements - how local dementia friendly initiatives are working to make their area more dementia friendly, and how much those living with dementia feel they benefit from them.

Healthwatch Wiltshire visited 15 community groups across Wiltshire and invited people to take part in a survey or a 1:1 interview to gather their feedback.

The report details what people living with dementia and their carers value most about dementia friendly initiatives and can be accessed via the link above.

WILTSHIRE POLICE

CPT Area Briefing

Wiltshire East Community Policing Team

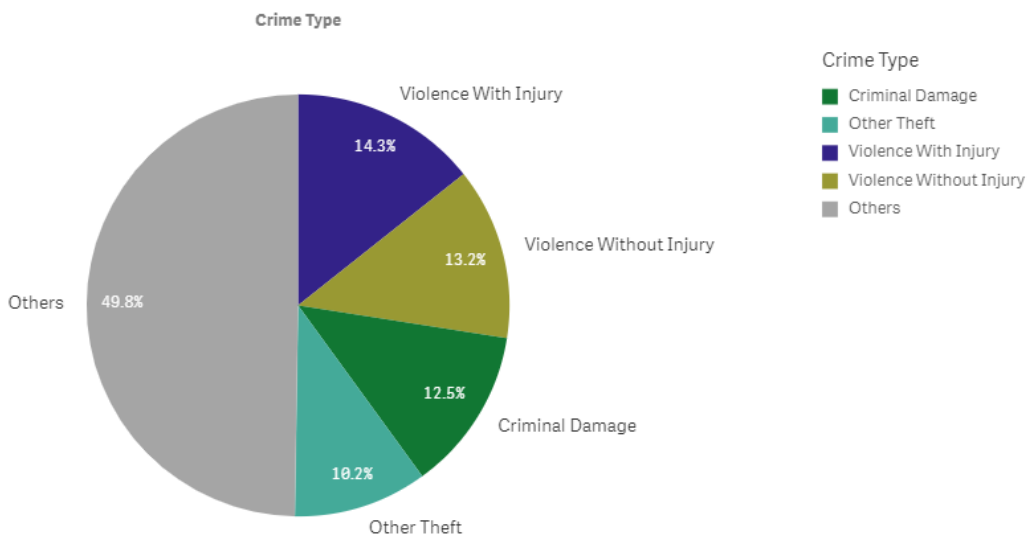


Proud to serve and protect our communities

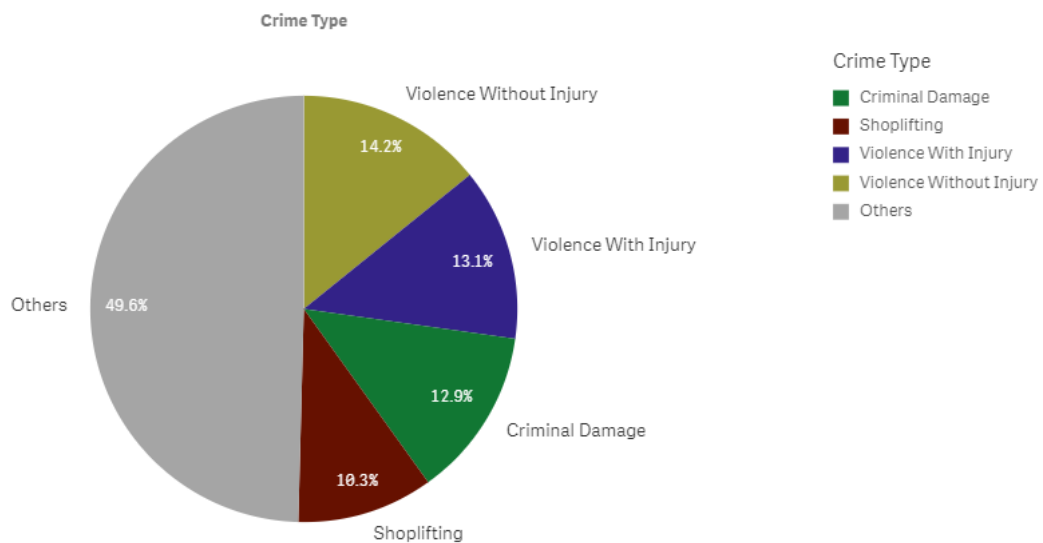
August 2019

PERFORMANCE

Your Area - Five Highest Crime Groups (Previous 12 months)



Force Area - Five Highest Crime Groups (Previous 12 months)



Wiltshire East CPT - crime and incident demand for the 12 months to July 2019

WILTSHIRE POLICE

CPT Area Briefing

Wiltshire East Community Policing Team



Proud to serve and protect our communities

August 2019

Force-wide

- Wiltshire Police has reduced the volume of recorded crime by 1% in the 12 months to July 19 and continues to have one of the lowest crime rates in the country.
- Our service delivery remains consistently good.
- In July, we received 9,653 999 calls which we answered within 4 seconds on average and 14,474 101 calls which we answered within 1 minutes 44 seconds on average.
- In July, we also attended 1,862 emergency incidents within 10 minutes and 49 seconds on average.
- Wiltshire Police has seen a 26% reduction in vehicle crime and 20 per cent in burglary in the 12 months to June 2019. These are the most improved trends in the country.
- The Crime Survey of England & Wales recently ranked Wiltshire as one of the top forces nationally for public confidence. It covers the 12 months to December 2018 The publication can be found here: WWW.CRIMESURVEY.CO.UK

For more information on Wiltshire Police's performance please visit:

PCC's Website - <https://www.wiltshire-pcc.gov.uk/article/1847/Performance>

HMICFRS Website - <https://www.justiceinspectrates.gov.uk/hmicfrs/police-forces/wiltshire/>

Police.uk - <https://www.police.uk/wiltshire>

WILTSHIRE POLICE

CPT Area Briefing

Wiltshire East Community Policing Team

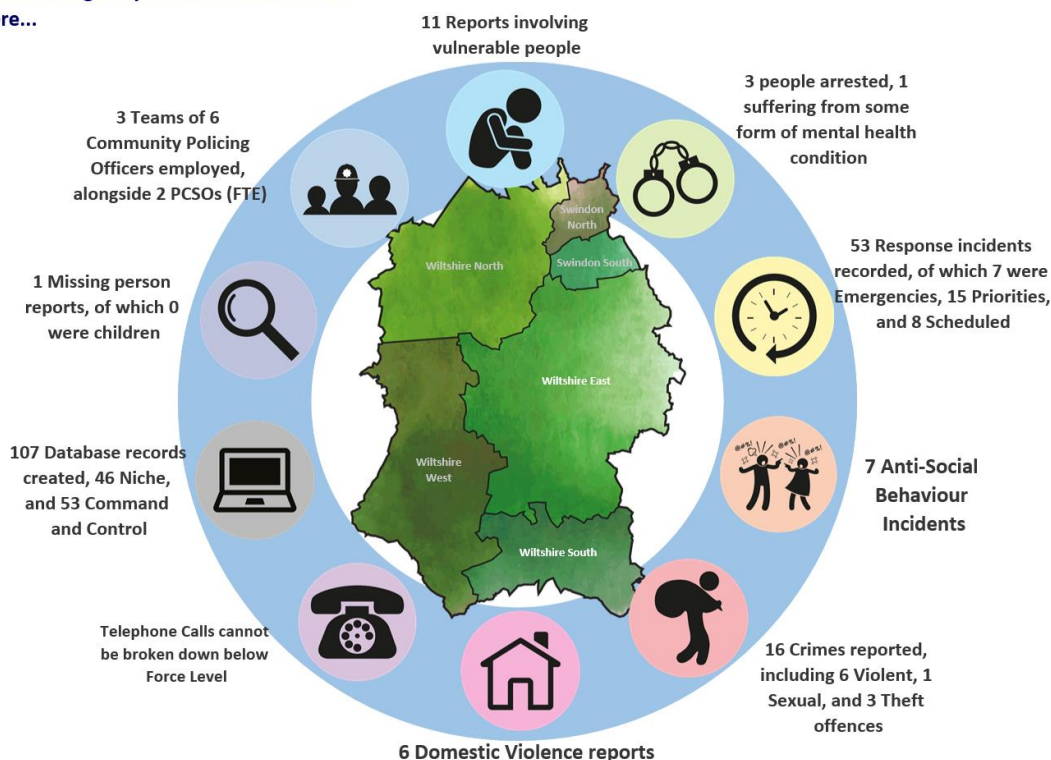


Proud to serve and protect our communities

August 2019

Area specific

On an average day in Wiltshire East there were...



Wiltshire East CPT Demand Overview – 12 months to July 2019

MARLBOROUGH CRIME STATISTICS FROM 01/07/2019 – 31/07/2019:

- 8 REPORTS ASB
- 5 REPORTS OF BURGLARY
- 4 REPORTS OF DRUG OFFENCES
- 19 REPORTS OF THEFT
- 19 REPORTS OF VIOLENT CRIME
- 12 REPORTS OF CRIMINAL DAMAGE
- 5 REPORTS OF PUBLIC ORDER
- 10 REPORTS OF VEHICLE OFFENCES (4x Beauty Spot theft from motor vehicles)

WILTSHIRE POLICE

CPT Area Briefing

Wiltshire East Community Policing Team



Proud to serve and protect our communities

August 2019

HIGH LEVEL CPT UPDATES:

Three men convicted of Burbage petrol station burglary - PS Tracey Holloway, East Wiltshire CPT deputy praised the combined efforts of staff and the community: "We would like to thank the member of the public who quickly rang us with information about the burglary in the early hours of the morning, this sense of community spirit was key to help our officers to locate, detain and prosecute these men. We would encourage the public to take action if they should witness a crime in progress by calling us on 999 straight away and provide as much detail as possible."



WILTSHIRE.POLICE.UK

Excellent team work leads to three men from London convicted of Burbage Petrol Station burglary - Wiltshire Police

On 31 July at Salisbury Crown Court three men pleaded guilty to a burglary at a petrol station in...

Marlborough Police
 Published by Emily Sykes [?] · 5 August at 07:34 · 🌐

Team 3 continuing patrols of your local beauty spots to deter thefts from parked cars this Sunday afternoon. 🍀 🇮🇪 🇺🇸



WILTSHIRE POLICE

CPT Area Briefing

Wiltshire East Community Policing Team



Proud to serve and protect our communities

August 2019



Marlborough Police

Published by CrowdControlHQ [?] · 2 August at 16:07 ·

A man was arrested in Marlborough on suspicion of drug offences last night (August 2).

Officers stopped a Vauxhall Astra being driven in Poulton Hill at approximately 7pm.

Drugs paraphernalia was sighted in the footwell of the vehicle and a search was carried out under the Misuse of Drugs Act.

A 20-year-old man from the Marlborough area was arrested on suspicion of possession with intent to supply class A drugs.

He has since been released under investigation while enquiries are ongoing.

PC Emily Grigor said: "This was an excellent stop by officers who had concerns about the manner in which the vehicle was being driven.

"When the vehicle was stopped and a search carried out, approximately 15 wraps of suspected class A drugs were located along with drugs paraphernalia. The driver was arrested and our investigation is ongoing.

"We'd urge any members of the public who have concerns that drug activity is taking place in their neighbourhood to call us on 101 and we will take appropriate action."



Marlborough Police

Published by James Robbins [?] · 21 July at 15:15 ·

PCSO BRAITHWAITE and PC 'Stainless' STEELE have been patrolling Priors Gardens today. Two youths were located last week smoking cannabis and are being dealt with by community resolution to educate them in the perils of smoking Cannabis which is still a class B drug.



Wiltshire East CPT has a new Community Policing Sergeant.

Tracey HOLLOWAY has worked for Wiltshire Police for 13 years starting her career as a PCSO. She has worked in community policing throughout her career with roles such as Beat manger, Community Coordinator and Team Sgt.

"My role as the deputy Sgt is to ensure we engage with our communities and promote our visibility; Ensuring the CPT respond effectively to longer-term community issues and the coordination of multi-agency approaches to problem solving.

I have worked the majority of my career in Salisbury dealing with many community issues. I am passionate about community policing and enjoy the challenge of problem solving from different areas. I look forward to working in the local community of Devizes"

WILTSHIRE POLICE

CPT Area Briefing

Wiltshire East Community Policing Team



Proud to serve and protect our communities

August 2019

YOUR CPT – Wiltshire East



A/Inspector Pete Foster

Peter.Foster@wiltshire.pnn.police.uk



Sgt Tracey Holloway – Sector Deputy

Tracey.Holloway@Wiltshire.pnn.police.uk



PC Emily Grigor – Community Coordinator

Emily.Grigor@Wiltshire.pnn.police.uk

WILTSHIRE POLICE

CPT Area Briefing

Wiltshire East Community Policing Team



Proud to serve and **protect** our communities

August 2019



PCSO Mark Braithwaite – Marlborough Town

Mark.Braithwaite@Wiltshire.pnn.police.uk



PCSO Melissa Camilleri – Marlborough Rural

Melissa.Camilleri@Wiltshire.pnn.police.uk



PCSO Emily Sykes – Marlborough Town

Emily.Sykes@Wiltshire.pnn.police.uk

You can find out more about Wiltshire East CPT, including news stories and contacts for local officers, on our website: www.wiltshire.police.uk/WiltshireEast

WILTSHIRE POLICE

CPT Area Briefing

Wiltshire East Community Policing Team



Proud to serve and protect our communities

August 2019

LOCAL PRIORITIES

CPT Inspector to update progress on each

PRIORITIES FOR WILTSHIRE EAST CPT	UPDATE
Priority 1: <u>ANTISOCIAL BEHAVIOUR</u>	
<p>Priory Gardens – Drug use & anti-social behaviour Skate Park & Car Park – Drug use & vehicle anti-social behaviour</p>	<p>Continued high visibility patrols of the area. This is not only by our East Sector PC's and PCSO's but also our Special Ops colleagues, such as Firearms and dogs.</p>
Priority 2: RURAL CRIME: HARECOURSING AND BEAUTY SPOT THEFTS	
<p>It is imperative that we maintain a high visible presence within our rural county. As summertime is fast approaching, we anticipate an increase in visitors to both our Beauty Spot areas and countryside.</p> <p>We will be aiming to regularly patrol our Beauty Spots and our rural sites that unfortunately do become a target of vehicle and rural crime.</p> <p><u>ADVICE:</u></p> <p>It is important for members of the public not to leave any valuables within their vehicles. It is also important for members of the Public to report any suspicious activity to us via 101 or 999 if it is a crime in progress.</p>	<p>Continued high visibility patrols in the most vulnerable areas.</p> <p>We are still receiving reports of vehicles having been broken in to- please ensure you do not leave any valuables in your cars.</p>
Priority 3: VEHICLE CRIME AND COMMUNITY SPEED WATCH	
<p>Keeping our roads safe is extremely important within our area as we have several A Roads that pass through our County.</p> <p>We will be receiving fortnightly updates from our Community Speed Watch Teams with specific areas to target. It is important that we work with the general public to identify unsafe road users within our county. We hope to show how hard we will be working to target the roads through our Social Media updates and cooperation with Community Speed Watch Schemes</p>	<p>Continued high visibility mobile patrols at significant times of day.</p>

WILTSHIRE POLICE

CPT Area Briefing

Wiltshire East Community Policing Team



Proud to serve and protect our communities

August 2019

Priority 4: BURGLARIES

We have seen an increase in reports of both domestic and commercial burglaries within the Marlborough area.

ADVICE FOR COMMERCIAL PREMISES:

- Removing high value goods from window displays and leave the till open - by leaving the till visible, open and clearly empty, any burglars seeking cash are likely to lose interest.
- Install dusk-to-dawn lighting at any entrance to the property that is overlooked and by securing high risk display cabinets, such as for tobacco displays, with protective grilles and shutters.
- Bank your cash - If you do not leave cash in the store overnight it cannot be stolen in a burglary. Night safe facilities are available after opening hours. If you do not use a specialist cash collection agency be sure you vary the route you take to the bank and the times you leave the shop.
- Doors and windows are particularly vulnerable - use security-rated products to make them more burglar-resistant. For more details visit Secure by Design.

ADVICE FOR DOMESTIC PREMISES:

- Lock your doors and windows every time you leave the house, even when just in the garden and never leave a spare key in a hiding place like in a plant pot or letter box - a thief knows all the hiding places
- Register all serial numbers from electrical items, tools and garden equipment with Immobilise.com the free national property register. Mark items without serial numbers with an artificial DNA property marker such as Smartwater or SelectaDNA.
- Use a timer to set lights to mimic your usual activity when you are not at home.
- Do not open the door to anyone you don't know or are not expecting. Always check by using a spy-hole or look through a window. Don't trust an ID card.
- Always report any suspicious activity, note any vehicle registrations, descriptions of persons involved and direction of travel.
- Consider installing a monitored burglar alarm, and only use a company that is registered or certified with the NSI or the SSIAB.
- Take photographs of all jewellery including hallmarks and keep them safe. Make sure that you have up to date contents insurance.
- Keep all keys, purses and wallets out of sight and away from the letterbox.

WILTSHIRE POLICE

CPT Area Briefing

Wiltshire East Community Policing Team



Proud to serve and protect our communities

August 2019

HIGH LEVEL PCC UPDATES

- **Pay increase** - Police Officers are to receive a 2.5% pay increase as agreed by the Government. This is welcome news and well deserved, I only hope that the same increase is also afforded to police staff as well. However, it is expected that we will have to meet this increase from existing Wiltshire Police budgets and that no further funding will come from the Government to fund this rise, which is disappointing and I continue to lobby the Government for fairer funding in Wiltshire.
- **PCSOs** - Last month Wiltshire Police Federation, which represents police officers within the Force, wrote an open letter suggesting that the Force should 'axe PCSOs' and recruit police constables instead. Both the Chief and I strongly refuted this suggestion. We both recognise the key role that PCSOs play in community engagement, intelligence gathering and supporting the most vulnerable. The role of a PCSO is a completely different one to that of a police constable and they play a key role in our community policing teams.
- **Additional police officers** - I was pleased to hear the new Prime Minister's commitment to policing and his promise of 20,000 additional police officers in the next three years. We don't know what this will look like in terms of how many more we will get in Wiltshire but I trust that more detail will soon be forthcoming. I do have some concerns around the practicalities of recruiting so many officers in such a short period of time and it certainly won't happen overnight, with it taking around a year to recruit and train an officer before they're able to go on the beat, but his commitment to strengthening our police forces is welcome nonetheless.

HIGH LEVEL FORCE UPDATES

- **Youth crime** – A Government report into the increase in youth violence has been welcomed by the Force. Chief Constable Kier Pritchard has said that although there hasn't been a significant increase in Wiltshire, it is still a concerning issue for local people. He is calling for a multi-agency approach and focused on the need to engage with young people to help prevent them from falling into a life of crime.
- **Rural crime** – Wiltshire has bucked the national trend when it comes to rural crime, recording a 36% year-on-year drop when it comes to the amount of money this type of crime is costing people in the county. This is believed to be due to the focus our Rural Crime Team has placed on crime prevention advice, including the encouragement of CCTV, anti-poaching ditches and the installation of GPS trackers on equipment.

WILTSHIRE POLICE

CPT Area Briefing

Wiltshire East Community Policing Team



Proud to serve and protect our communities

August 2019

- **Domestic abuse** – As part of our Summer Demand campaign, we have been focusing on highlighting the important topic of domestic abuse and making sure victims know how to access the support available. There is also a focus on encouraging friends and neighbours to report concerns to the police. You can read more online: <https://www.wiltshire.police.uk/article/4820/VIDEO-What-to-do-if-you-have-concerns-your-neighbour-is-being-abused-by-a-partner>

GET INVOLVED

- You can keep up to date with the latest news in your area by signing up to our Community Messaging service – www.wiltsmessaging.co.uk
- You can follow your CPT on social media <https://www.wiltshire.police.uk/Followus>
- More information on your CPT area can be found here: www.wiltshire.police.uk and here www.wiltshire-pcc.gov.uk

FEEDBACK/ACTIONS TAKEN

Healthwatch reveals year of achievements

Gathering hundreds of your health and social care stories and championing what matters to you have formed the cornerstone of a busy year for Healthwatch Wiltshire.

A Year in Review showcases how we've made a difference to your community and how we've helped you find the answers you need.

The year in numbers

In the past year (2018-19):

- 966 people have shared their experiences with us.
- We have visited 23 services and attended 33 community events to understand people's experience of care.
- We have made 26 recommendations to services to make health and care better in Wiltshire.
- 141 people have accessed our advice and information online or contacted us with questions about local support – the majority asking us about NHS services (31%).
- We reached 195,989 people on social media.
- We have 37 volunteers helping us with our work, giving 839 hours of their own time.

Changes to your community

This year, our main focus has been on listening to people's views and experiences of mental health services, with more than 300 people telling us about issues such as accessing services and long wait lists. This feedback has been shared directly with those that pay



for and provide these services, who have pledged to work more closely together to make improvements.

More than 100 people shared their views on a new health and wellbeing vision for Wiltshire. Most said that the public should take more responsibility for their own health but wanted to see an improvement in health promotion, information and education and for health and care services to be more joined up. These views

were used to create the Health and Wellbeing Strategy set out by Wiltshire Council.

We also spoke to people about their experiences of being discharged from Salisbury District Hospital. Most of the comments we received were positive, but suggestions for improved signage and clinic times have been taken on board by the hospital who, among a number of improvements, are planning a new patient information app.

Stacey Plumb, Healthwatch Wiltshire Manager, said: "Thank you to everyone who has given us their feedback this year. Our annual report shows how your comments and experiences are shaping health and social care services in Wiltshire and we are looking forward to hearing from even more people in the coming year to give them the opportunity to influence change.

"I'd also like to say a huge thank you to our dedicated team of volunteers and to all the local organisations that work with us to ensure local voices are heard."

A Year in Review is available on our website.

Wish lists for health and care services in BaNES, Swindon and Wiltshire revealed

Hundreds of people in Bath & North East Somerset, Swindon and Wiltshire have shared their views on how to improve NHS health services where they live.

Increasing the use of technology for booking appointments and data sharing between health services; helping people lead a healthier lifestyle to prevent illness; shortening waiting times for access to GP appointments; and for health professionals to have a better understanding of long-term health conditions, such as autism, were some of the themes that emerged from people in the region.

Their views were shared as part of the Healthwatch #WhatWouldYouDo? campaign and the findings are revealed in a new report.

Nearly 700 residents, patients and their families took part in 'What Would You do?' activities, which launched in March to encourage people in the region to share their views about how extra money from the Government should be spent on local NHS services.

The public were asked to give their views about how local services could improve, and to share ideas about how the NHS can help people live healthier lives and take more control of their care.

Stacey Plumb, Manager at Healthwatch Wiltshire, said: "The Government is investing an additional £20 billion a year until 2023 in the NHS as part of the NHS Long Term Plan. We were asked to help find out what local people thought was the best way for the NHS in Bath & North East Somerset, Swindon and Wiltshire to invest in the right services as part of this plan.



"It was wonderful to listen to so many people keen to make a difference in our local NHS. These views are all in the report and we will now monitor how the local NHS responds."

Dr Ian Orpen, Chair of the BaNES, Swindon and Wiltshire Clinical Board, said: "It's clear that local people have strong views about how health and care services should be organised in the future. We will listen to them and make sure we address their concerns as we draw up plans for how we organise services over the coming years."

The report is being shared with the local NHS and can be viewed on our website.



DORSET & WILTSHIRE FIRE & RESCUE SERVICE

MARLBOROUGH AREA BOARD REPORT 03/09/19

Community Safety Plan

DWFRS Community Safety Plan can be found on the DWFRS website;
<http://www.dwfire.org.uk/community-safety-plan/>

Prevention

We are committed to making a real difference to the lives of people in Dorset and Wiltshire. Our aim is to reduce the level of risk and harm to our communities from fire, targeting those most at risk. We do this primarily through our Safe and Well visits.

A Safe and Well visit is **FREE** and normally lasts about one hour covering topics such as:

- Using electricity safely
- Cooking safely
- Making an escape plan
- What to do if there is a fire
- Keeping children safe
- Good practice – night time routine and other points relevant to you
- Identifying and discussing any further support the occupier may need

Are you or anyone you know: -

- Over the age of 65?
- Need a smoke detector?
- Have a long-term health condition?
- Suffer from poor hearing or sight loss?
- Would you struggle to escape in the event of a fire?

If you can answer yes to more than one of these questions, then please call us on 0800 038 2323 or visit <https://www.dwfire.org.uk/safety/safe-and-well-visits/>



Protection

On-going interaction by Protection Team members with Local Authorities, Private landlords and tenants regarding fire safety-related matters: external cladding systems; fire detection and warning systems; fire resisting doors (& self-closers); combustibility/fire resistance of construction materials; commercial and residential sprinklers systems and water-mist suppression systems

General Enquiries

If you have a general fire safety enquiry regarding commercial property, please email fire.safety@dwfire.org.uk and the Fire Safety Team will respond in office hours.

Fire Safety Complaint

If you wish to tell us about fire safety risks in commercial premises, such as locked or blocked fire exits, you have three options:

- You can email the fire safety department at enforcement@dwfire.org.uk
- Call 01722 69 1717 during office hours (9am-5pm).
- Call our Service Control Centre on 0306 799 0019 out of office hours (5pm-9am)

On Call Recruitment

Have you always wondered if you could join the fire service, but haven't had the opportunity to find out more? Have you found yourself seeking your next challenge, keen to give back to the local community or wanting to learn new skills including leadership and teamwork? Then becoming an on-call firefighter is for you.

As a paid position, on-call firefighters commit anywhere between 40 to 120 hours per week, during which time they must be able to respond to the station immediately.

Many have 'normal' jobs during the day, then upon their return home make themselves available overnight or during the weekends. Some of our crew respond from their workplaces during the day, and we are very grateful to their employers for releasing them to perform their vital duties.

Anyone over 18 years old can apply (although you can also apply once you are 17½) you must be able to respond and attend the fire station within 5-8 minutes, you have a good standard of physical fitness (i.e. you are generally active), and you must have the right to work in the UK.

Further information on becoming an On Call Firefighter can be found at www.dwfire.org.uk/working-for-us/on-call-firefighters/ or should you have any questions, you can call **01722 691444**.



Recent News & Events

Barbecues



Barbecues are great when the sun is shining and you have friends and family to visit, but they do carry a fire risk.

- Always position the barbecue on a level site, away from wooden fencing, sheds and hedges.
- Don't place the barbecue on dry grass or vegetation.
- Use firelighters or barbecue fuel to light the coals – NEVER use petrol or paraffin.
- Keep children and pets well away from the cooking area and never leave the barbecue unattended.
- Be careful when grilling fatty foods, as the fat can cause the coals to flare up.
- Don't move the barbecue until it is completely cool, and make sure any remaining charcoal is cold before disposing of it carefully. Ideally use water to damp down the ashes.
- If using a disposable barbecue, make sure it is completely cold before disposal.
- NEVER dispose of hot barbecue ashes in plastic rubbish bins as this can easily start a fire.
- Always have a bucket of water or garden hose to hand in case a barbecue gets out of hand.
- Make sure the controls and cylinder valves of a gas barbecue are turned off before you change the cylinder, which should be done in a well-ventilated area. Always check the connections for leaks.
- Store gas cylinders outside and protect them from direct sunlight and frost.
- Make sure your gas barbecue is correctly serviced and that all joints are tightened, safe and secure.
- Never use a barbecue indoors or inside a tent, as they produce potentially lethal carbon monoxide.



Heath fires and countryside safety



When you are out and about enjoying the countryside, there are some things you can do in order to protect our beautiful surroundings and keep you safe.

Large wildfires are thankfully rare but, when they do occur, they can be very serious and affect large areas of the countryside. They also take a great deal of resources to bring under control, which impacts the availability of appliances for property fires and other emergencies.

The Upton Heath fire in Dorset in 2011, for example, damaged approximately 250 acres of the heath and required the mobilisation of 30 fire engines and 11 Land Rovers.

Wildfires can ravish the local wildlife, destroying ecosystems in a matter of hours that have taken years to build up. If a wildfire encroaches upon farmland, then crops and farm buildings can be consumed, and homes that border heathland can also be at risk.

At their worst, wildfires can cause death or injury to people. A developed wildfire creates its own wind, which drives it at speeds faster than people can get out of its way.

Steps you can take to avoid starting a wildfire:

- Avoid open fires in the countryside. If you must have a fire, make sure that you're in a designated safe area.
- Put out cigarettes and other smoking materials properly before you leave your vehicle.
- Do not throw cigarette ends out of your vehicle. They could start a fire and destroy surrounding countryside.
- Don't leave bottles or glass in woodlands, as sunlight shining through the glass can cause a fire to start. Take the items home or put them in a waste or recycling bin.
- If you see a fire in the countryside, report it immediately. Do not try to tackle a fire yourself; usually they can't be put out with a bucket of water. Please call the fire service and leave the area as soon as possible.



- Ensure that you know your location or a landmark so you can direct the fire service.

Response

Total Fire Calls for Marlborough Fire Station for period: July and August 2019

Category	Total Incidents
No. of False Alarms	20
No. of Fires	5
No. of Road Traffic Collisions and other Emergencies	7
No. Of Medical emergencies	0
Total	32

Total Fire Calls for Ramsbury Fire Station for period: July and August 2019

Category	Total Incidents
No. of False Alarms	6
No. of Fires	0
No. of Road Traffic Collisions and other Emergencies	1
No. Of Medical emergencies	0
Total	7

Dave Adamson
Station Manager
South West Wiltshire Email: dave.adamson@dwfire.org.uk
Tel: 07734 483892
Twitter - @DWFRSDaveAdamson

